

# User Manual for EaseUS MS SQL Recovery

## Welcome

**EaseUS MS SQL Recovery** is an easy to use application designed to repair corrupt or damaged Microsoft SQL Server database (MDF) files in a safe and non-destructive manner. It uses powerful algorithms to perform thorough scan of MDF file so as to recover as much data as possible. The software never deletes or modifies original data and even heavily damaged files can be optimally repaired and restored.

## Getting Started

Before using **EaseUS MS SQL Recovery**, let us have a basic idea of what the software does, system requirement and steps to run the software, activate the software, etc. This way you will be able to use the software more efficiently.

## Hardware Requirements

**Hard Disk:** At least 250 MB of free disk space

**RAM:** 2 GB minimum (4 GB recommended)

## System Requirements

Windows XP®

Windows Vista®

Windows® 7

Windows® 8

Windows® 8.1

Windows® 10

Windows® Server 2000

Windows® Server 2003

Windows® Server 2008

Windows® Server 2012

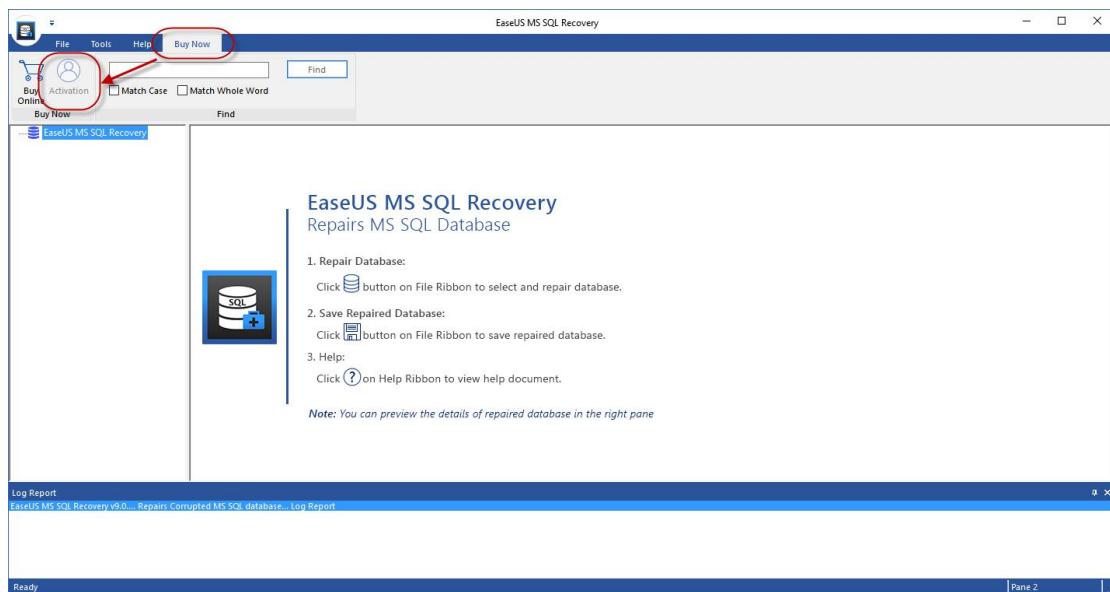
## Supported MS SQL Versions

MS SQL Server 2017

MS SQL Server 2016  
MS SQL Server 2014  
MS SQL Server 2012  
MS SQL Server 2008 R2, 2008, 2008 (64 bit), 2008 Express  
MS SQL Server 2005, 2005 (64 bit), 2005 Express  
MS SQL Server 2000, 2000 (64 bit)  
MS SQL 7.0 and mixed formats

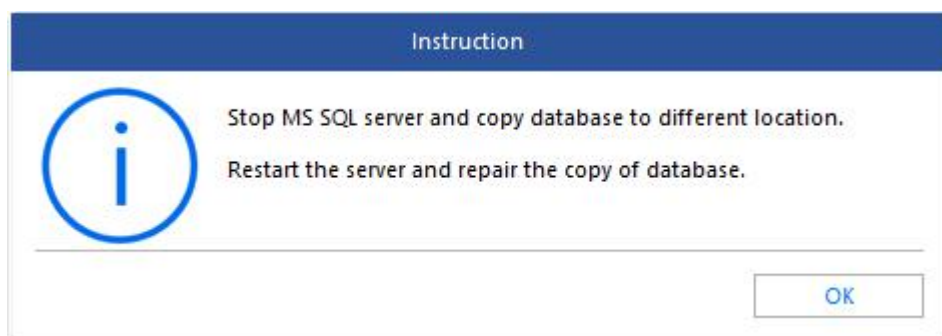
## Activation

Install and run the trial version, switch to **Buy Now** and click **Activation**. Then you could input the license code and complete the activation.

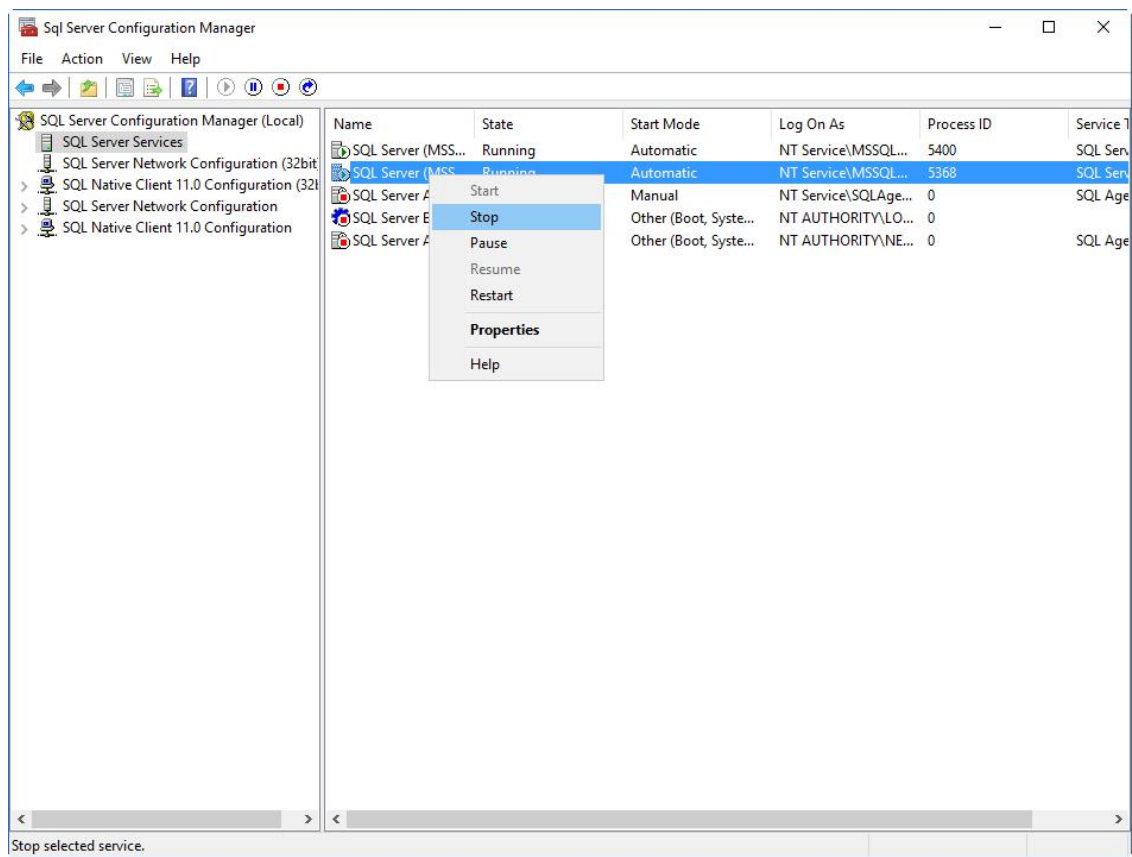


## Repair Damaged MS SQL Database

1. After running the software, you will get this prompt if your computer has MS SQL Server installed.



2. Click "Start" -> "Microsoft SQL Server" -> "SQL Server Configuration Manager", choose **SQL Server Services** and right click on **SQL Server** to stop it.



Or input command line in **CMD** to stop the service:

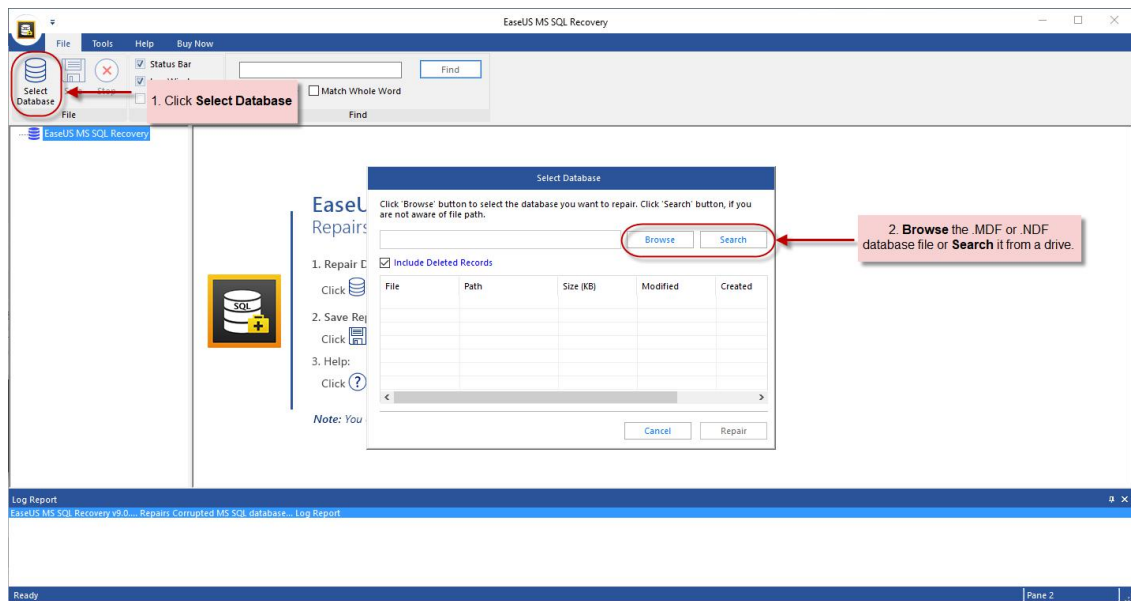
**net stop MSSQLSERVER**

```
Administrator: Command Prompt
Microsoft Windows [Version 10.0.17134.590]
(c) 2018 Microsoft Corporation. All rights reserved.

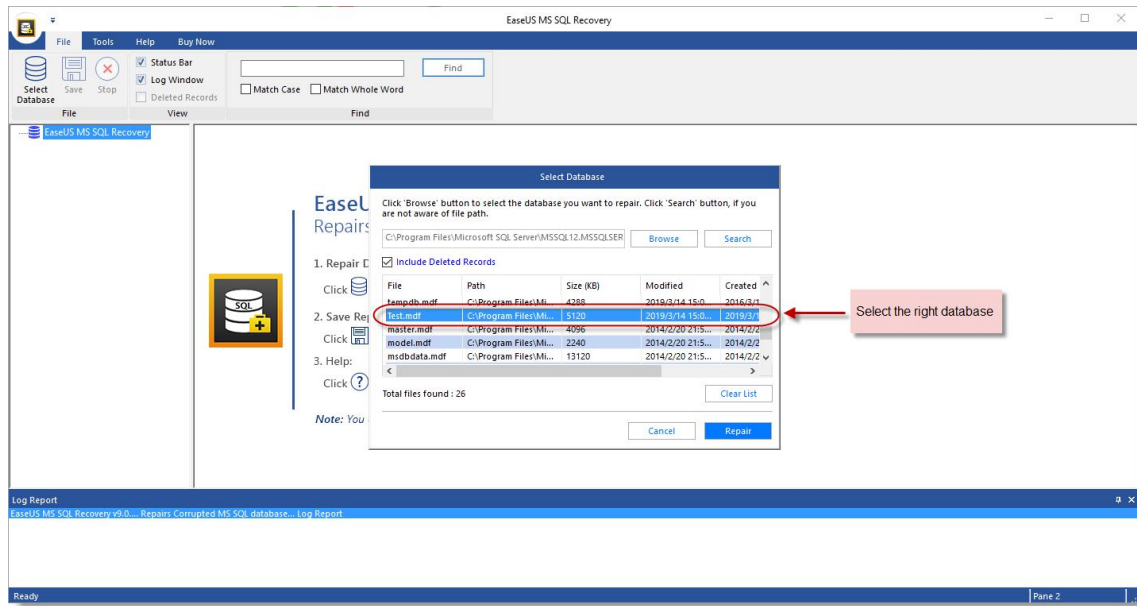
C:\WINDOWS\system32>net stop MSSQLSERVER
The SQL Server (MSSQLSERVER) service is stopping.
The SQL Server (MSSQLSERVER) service was stopped successfully.

C:\WINDOWS\system32>
```

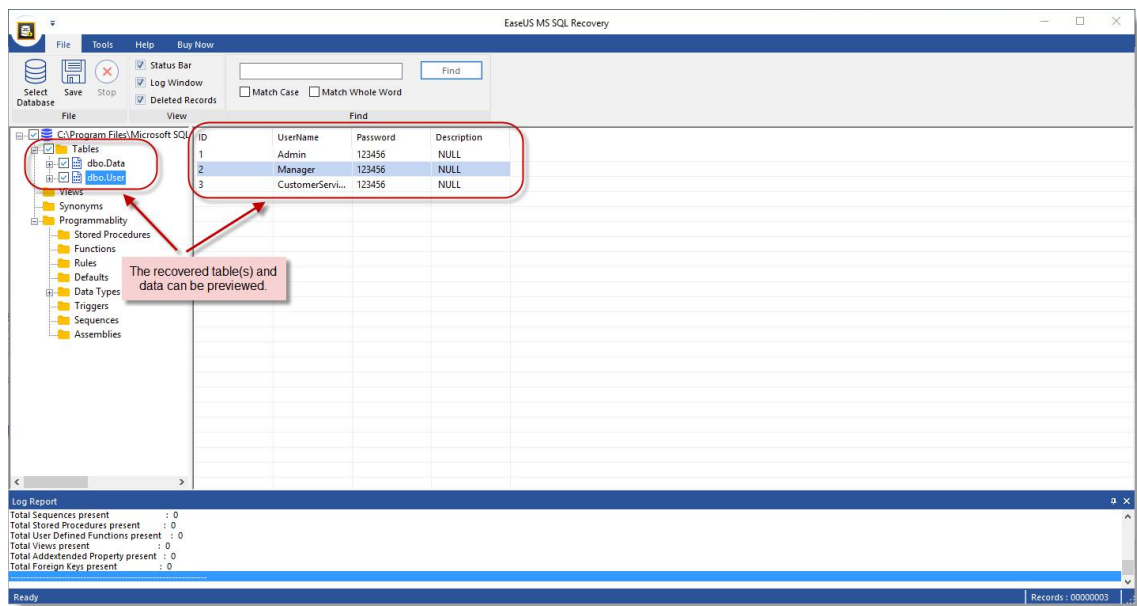
3. Click "**Select Database**" and **Browse** the file or **Search** it from the drive. Please tick "**Include Deleted Records**" if you want to find the deleted items in this database.



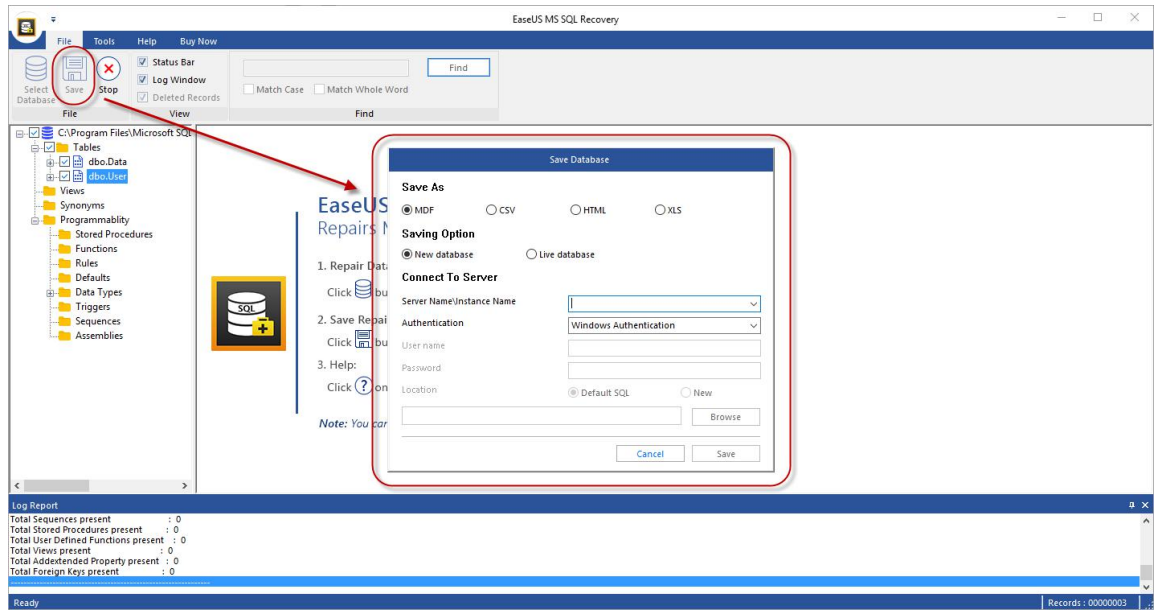
4. Select the right database and click **Repair**.



5. You are able to view the content of the database after recovery.



6. Click "Save" and save it as a new database or overwrite the existing database.



7. Restart SQL Server service and verify the recovered database.